

FULLER MIDDLE SCHOOL FEASIBILITY STUDY

School Building Committee
September 11, 2018

BENEFITS TO THE STUDENTS AND COMMUNITY

Benefits for the Students:

- Appropriate classroom sizes and relationships according to contemporary educational standards.
- Collaboration spaces that support project based learning - preparing students for the contemporary workforce.
- Natural daylighting and healthy ventilation for improved educational outcomes.
- Full range of special education spaces to support individual student needs.
- STEM (science, technology, engineering and mathematics) instruction spaces to fulfill district's elementary feeder school commitment to STEM curricula.
- Spaces that facilitate teacher collaboration toward improved teaching practices.

Benefits for the Community:

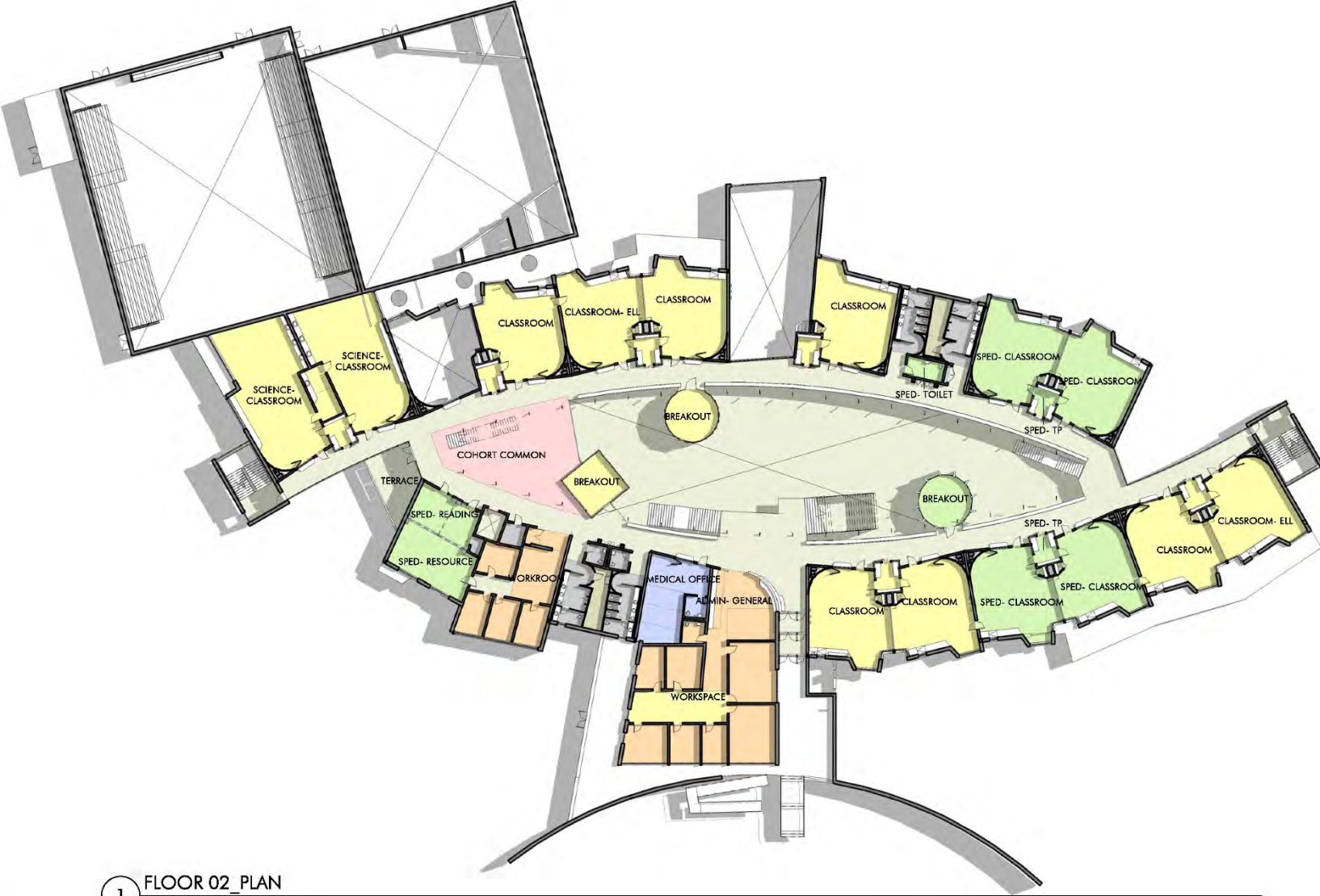
- Replacement of decaying, inefficient facility with ever increasing maintenance and operation cost burden to the City. Reduced building size, modern materials, and far more energy efficient HVAC systems will increase operating efficiency over the next 70 years.
- Reduced building footprint yields increased City open space and playfield space, and improves impact to adjacent conservation lands.
- Traffic calming measures improve public safety.
- Renewal of community access athletic and performance facilities for future use.

SCHEMATIC DESIGN SUMMARY - FIRST FLOOR PLAN



1 FLOOR 01_PLAN
1/32" = 1'-0"

SCHEMATIC DESIGN SUMMARY - SECOND FLOOR PLAN



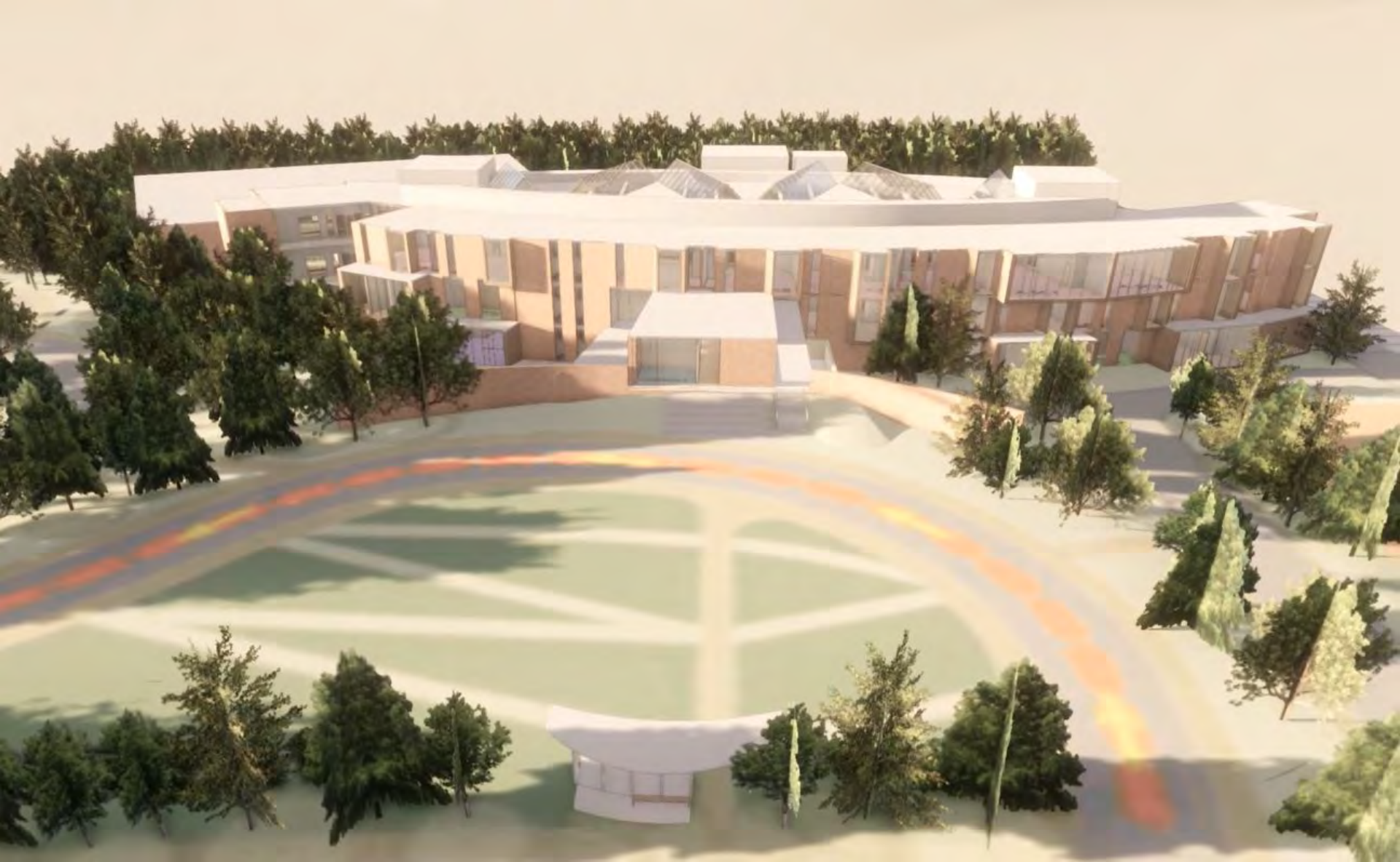
1 FLOOR 02_PLAN
1/32" = 1'-0"

SCHEMATIC DESIGN SUMMARY - THIRD FLOOR PLAN



1 FLOOR 03_PLAN
1/32" = 1'-0"

SCHEMATIC DESIGN SUMMARY - FRONT VIEW



SCHEMATIC DESIGN SUMMARY – REAR VIEW

